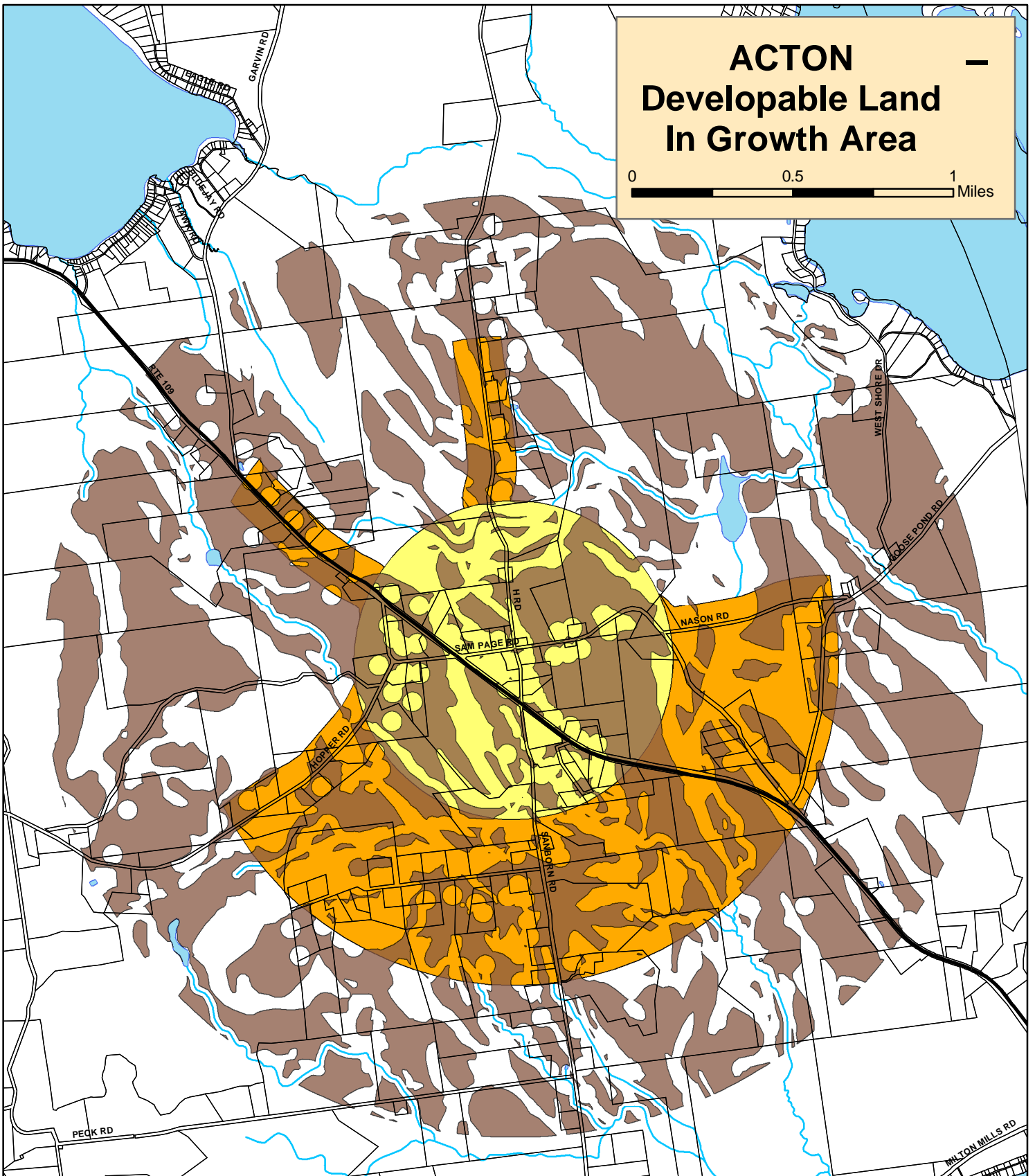


ACTON

Developable Land In Growth Area

0 0.5 1 Miles



Legend

- Streams
- Rivers, Ponds, and Lakes
- Developable Land*
- Transition Area (2-acre minimum lot size)
- Village Area (1-acre minimum lot size)
- Tax Parcels

*Developable Land includes all land that is not in public ownership, within a 2-acre buffer surrounding existing residential locations, or constrained by streams, stream buffers (75 ft), ponds, pond buffers (250 ft), rivers, river buffers (250 ft), wetlands, 100-year floodplain, hydric soils, steep slopes and wetlands.

Produced by the Southern Maine Regional Planning Commission. For planning purposes only. Roads, waterbodies & streams courtesy of Maine Office of GIS.

